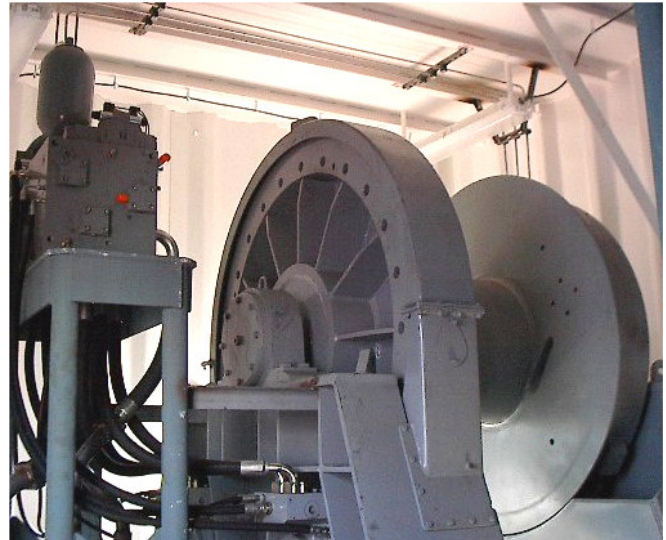
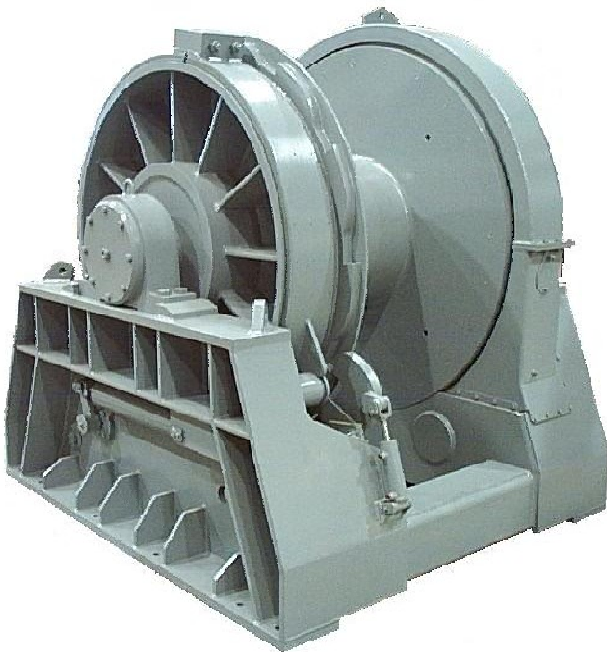


Application: Single chainlifter, hydraulic anchor windlass

- Features:
- Handwheel applied / released drum band brake
 - Enclosed drive gears
 - Planetary drive with failsafe brake
 - Heavy duty manual band brake and clutch
 - Warping head
 - Self aligning roller element bearings
 - Designed and certified to Lloyds Registry of Shipping guidelines
 - Single lever control valve

- Options:
- Dual wildcats and warping heads
 - Warping head
 - Electric drive motor

Specifications / Performance	
Brake Capacity	51,147 lbs. (23,200 kg.)
Wildcat Pull	14,500 lbs. @ 32 ft/min (6,577 kg. @ 10 m/min)
Warping Head Pull	12,500 lbs. @ 36 ft/min (5,670 kg. @ 11 m/min)
Chain Size	32 mm stud link
Clutch	Manual Jaw Clutch



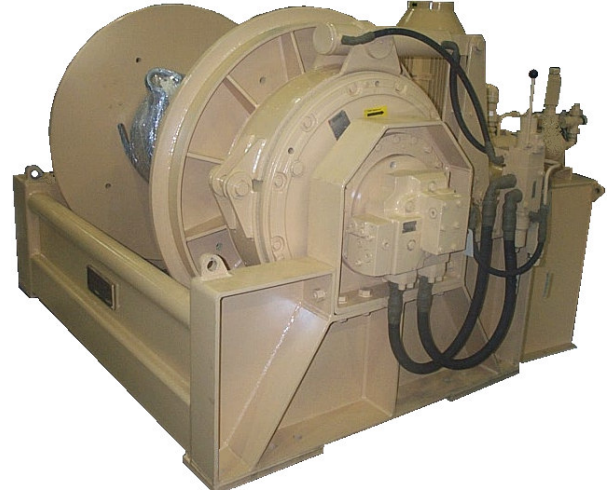
One of the six M-3270 mooring winches installed on the GLD&D Dredge No.55.

Application: Mooring / Anchor winch for active positioning of dredge.

- Features:
- Single reduction spur gears, dual low speed, high torque motors
 - Motors allow freewheeling and dual speed ranges
 - Spring applied, hydraulically released band brake
 - Rolling element main bearings
 - Ratchet and locking pawl

- Options:
- Levelwind
 - Lebus grooved shell

Specifications / Performance	
Bare Drum (low range)	180,000 lbs. @ 60 ft/min (81,650 kg. @ 18 m/min)
Full Drum (low range)	103,000 lbs. @ 105 ft/min (46,720 kg. @ 32 m/min)
Capacity	1,100 ft. of 2" dia. cable (335 m of 50 mm)
Drum Size	28" dia. barrel, 70" dia. flanges x 32" wide
Hydraulic Input	135 gpm @ 5000 psi



Application: Retrieving and deploying moorings for navigational buoys. Mooring chain is attached to a wire pendent and wound onto drum (shown above).
Customer: Canadian Coast Guard, CCGS J.E. Bernier

- Features:**
- Direct drive, rotating case, radial piston Hagglunds hydraulic motor
 - Failsafe, spring applied band brake
 - Rigid box frame construction, continuous welds
 - Heavy duty, spherical roller bearing
 - Motor mounted integrated valve manifold
 - Local control valve with remote pilot operation
 - Configured for deployment over either side

- Options:**
- 75 hp hydraulic power unit
 - Deck console
 - Wanderlead remote control

Specifications / Performance	
Bare Drum	14.0 tonnes @ 36 ft/min (14,000 kg. @ 11 m/min)
Full Drum	7.7 tonnes @ 62 ft/min (7,700 kg. @ 19 m/min)
Capacity	600 ft. of 1" stud link chain + 50 ft. wire pendent
Drum Size	20" dia. barrel, 50" dia. flanges x 40" wide
Power Unit Size	75 H.P.



Application: Mooring, Line Handling

- Features:
- Planetary drive
 - Welded steel construction
 - Warming head
 - FWD REV push button control (shipped loose)
 - 25 Hp Electric drive brake motor with failsafe brake
 - FVR Starter for 25 Hp (shipped loose)

- Options:
- Dual speeds
 - Hydraulic drive motor

Specifications / Performance	
Brake Capacity	9,900 lbs. (4,500 kg.)
Warming Head Pull	6,600 lbs. @ 112 ft/min (3,000 kg. @ 34 m/min)
Power	460 v 3 phz 60 Hz
Motor Size	25 Hp
Weight	

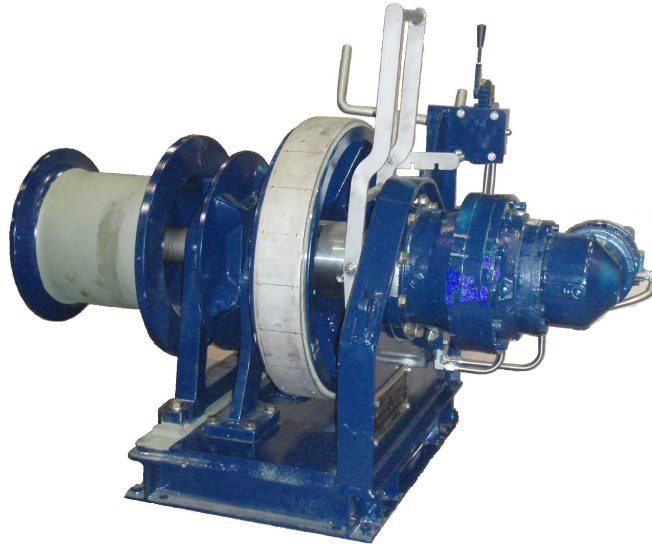


Application: Single chainlifter, hydraulic anchor windlass

- Features:
- Handwheel applied / released drum band brake
 - Planetary drive with failsafe brake
 - Heavy duty manual band brake and clutch
 - Warping head
 - Designed and certified to ABS guidelines
 - Single lever control valve

- Options:
- Dual wildcats and warping heads
 - Warping head
 - Electric drive motor

Specifications / Performance	
Brake Capacity	51,147 lbs. (23,200 kg.)
Wildcat Pull	14,500 lbs. @ 32 ft/min (6,577 kg. @ 10 m/min)
Warping Head Pull	12,500 lbs. @ 36 ft/min (5,670 kg. @ 11 m/min)
Chain Size	32 mm stud link
Clutch	Manual Jaw Clutch



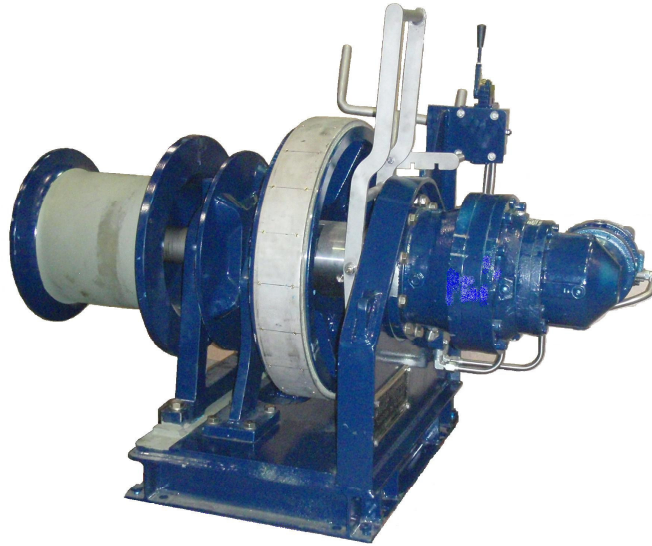
not exactly as shown

Application: Single chainlifter, hydraulic anchor windlass

- Features:
- Handwheel applied / released drum band brake
 - Planetary drive with failsafe brake
 - Heavy duty manual band brake and clutch
 - Warping head
 - Designed and certified to Lloyd's guidelines
 - Single lever control valve

- Options:
- Dual wildcats and warping heads
 - Warping head
 - Electric drive motor

Specifications / Performance	
Brake Capacity	15,200 lbs. (6,900 kg.)
Wildcat Pull	3,600 lbs. @ 30 ft/min (1,636 kg. @ 9 m/min)
Warping Head Pull	2,200 lbs. @ 34 ft/min (1,000 kg. @ 10 m/min)
Chain Size	16 mm stud link
Clutch	Manual Jaw Clutch



not exactly as shown

Application: Single chainlifter, hydraulic anchor windlass

- Features:
- Handwheel applied / released drum band brake
 - Planetary drive with failsafe brake
 - Heavy duty manual band brake and clutch
 - Warping head
 - Designed and certified to Lloyd's guidelines
 - Single lever control valve

- Options:
- Dual wildcats and warping heads
 - Warping head
 - Electric drive motor

Specifications / Performance	
Brake Capacity	15,200 lbs. (6,900 kg.)
Wildcat Pull	3,600 lbs. @ 30 ft/min (1,636 kg. @ 9 m/min)
Warping Head Pull	2,200 lbs. @ 34 ft/min (1,000 kg. @ 10 m/min)
Chain Size	14 mm stud link
Clutch	Manual Jaw Clutch



Anchor Windlass
Model: AW 11.9/42-32S

**ISO 9001-2008
REGISTERED**

Hawboldt Industries (1989) Ltd.
220 Highway 14, P.O. Box 80
Chester, NS, Canada, B0J 1J0
Tel: (902) 275-3591, Fax: (902) 275-5014
www.hawboldt.ca

